

Horn Creek Hemp

Sample Oregon Sweetgum

Strain

<LOQ	15.01%	17.50%
$\Delta 9$ THC	Total CBD	Total Cannabinoids
Not tested	Pass	175.0
Water Activity	Moisture	mg / g Total Cannabinoids

Sample ID **22110990535**

Matrix Flower

Metric

Harvest/Prod Date

Report Created 11/22/2022

Results Valid Until 11/22/2023

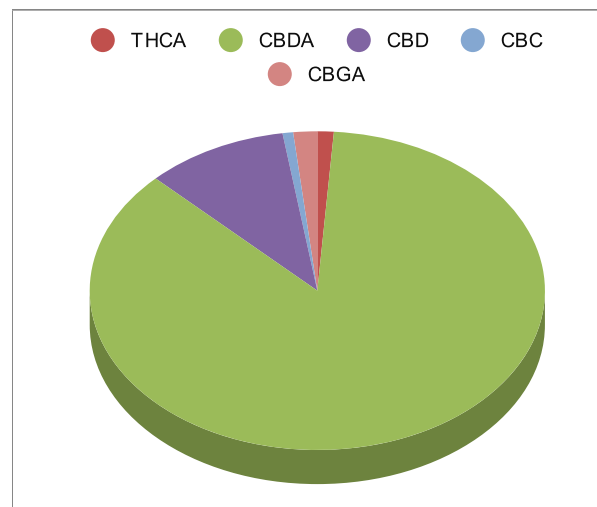
Sample Extracted
11/17/2022 17:15

Sample Analyzed
11/18/2022 15:05

Method SOP LO001-R10




Cannabinoids	%Weight	mg/ gram	LOQ(% /w)
$\Delta 9$ THC	<LOQ	<LOQ)	0.06
THCA	0.20	2.0	0.06
Total THC ($_{THCA} \times 0.877$) + $\Delta 9$ THC	0.18	1.8	0.11
CBDA	15.10	151.0	0.06
CBD	1.77	17.7	0.06
CBN	<LOQ	<LOQ)	0.06
$\Delta 8$ THC	<LOQ	<LOQ)	0.06
‡ CBC	0.13	1.3	0.06
‡ CBGA	0.30	3.0	0.06
‡ CBG	<LOQ	<LOQ)	0.06
‡ CBDV	<LOQ	<LOQ)	0.06
‡ CBDVA	<LOQ	<LOQ)	0.06
‡ THCVA	<LOQ	<LOQ)	0.06
‡ CBDQ	<LOQ	<LOQ)	0.06



Total THC and Total CBD are calculated values per OAR 333-064-0100. Cannabinoid values for plant matter samples are reported on a dry weight basis. Water activity action level is 0.65Aw. LOQ= Limit of Quantitation. NR=Not Reported.

Rogue Research Lab LLC
218 E. Main Street, Rogue River, OR 97537
Tel. 541-582-1962
ORELAP 4107 OLCC 101050708B
rogue-researchlab.com


Craig Berry - Lab Director
11/22/22


ROGUE RESEARCH LAB

Results pertain to submitted samples only. Rogue Research Lab LLC makes no claims as to the consumer safety or other risks associated with any detected or non-detected amounts of any pesticides, solvents or other adulterants. This report shall not be reproduced, unless in its entirety, without written approval from Rogue Research Lab LLC. Samples were received in good condition and all QC samples met acceptance criteria of the method; data available upon request. Analytes accompanied by dagger (‡) are not within the scope of accreditation and are for informational purposes only.

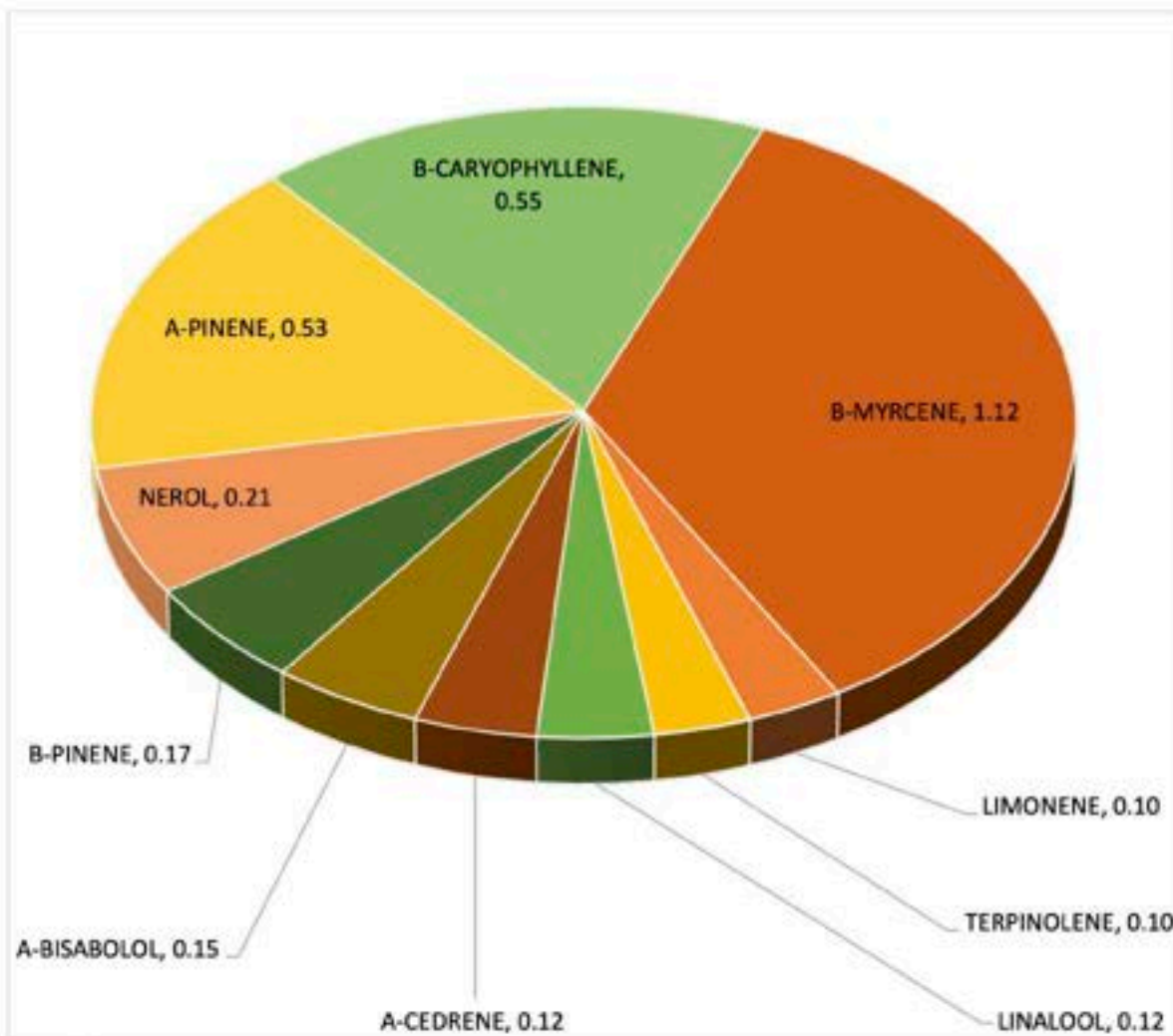


ROGUE RESEARCH LAB

Terpene Analysis

Customer: Horn Creek Hemp
Sample Name: Oregon Sweetgum
File Name: 21101560697
Date/Time Extracted: 10/28/2021 08:30
Date/Time Analyzed: 10/30/2021 13:14
Analysis Method/SOP: LO 001R7/IS2121R

TESTED FOR : A-BISABOLOL, A-CEDRENE, A-HUMULENE, A-PHELLANDRENE, A-PINENE, A-TERPINENE, B-CARYOPHYLLENE, B-MYRCENE, BORNEOL, B-PINENE, CAMPHENE, CAMPHOR, CARYOPHYLLENE OXIDE, CEDROL, CIS-NEROLIDOL, D-CARENE, DL-MENTHOL, EUCALYPTOL, FARNESENE, R&L FENCHONE, FENCHYL ALCOHOL, GERANIOL, GERANYL ACETATE, G-TERPINENE, GUAJOL, ISOBORNEOL, ISOPULEGOL, LIMONENE, LINALOOL, NEROL, OCIMENE, P-CYMENE, PULEGONE, SABINENE, TERPINEOL, TERPINOLENE, TRANS-NEROLIDOL, TRANS-OCIMENE, VALENCENE.



Craig Berry

Craig Berry - Lab Director

11/2/2021

Terpene total w/w%

3.17