

Horn Creek Hemp

Sample

Suver Haze

Strain

<LOQ	14.53%	17.01%
$\Delta 9$ THC	Total CBD	Total Cannabinoids
Not tested	Pass	170.1
Water Activity	10.79 Moisture	mg / g Total Cannabinoids

Sample ID

22110990531

Matrix

Flower

Metric

Harvest/Prod Date

Report Created

11/22/2022

Results Valid Until

11/22/2023

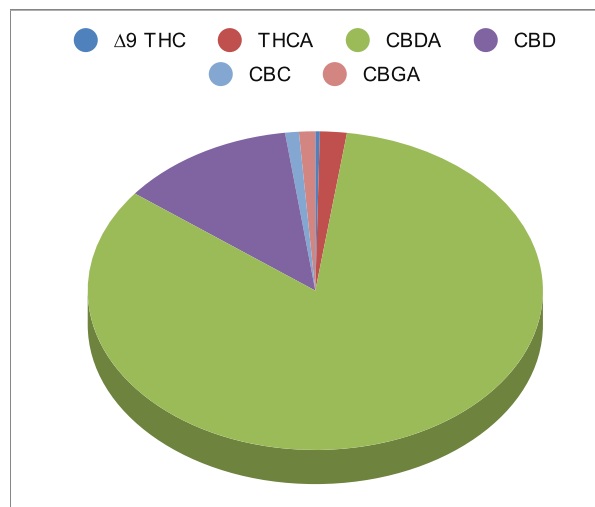
Sample Extracted
11/17/2022 17:15

Sample Analyzed
11/18/2022 14:17

Method SOP LO001-R10




Cannabinoids	%Weight	mg/ gram	LOQ(% /w)
$\Delta 9$ THC	<LOQ	<LOQ)	0.06
THCA	0.32	3.2	0.06
Total THC (THCA*0.877)+9THC	0.34	3.4	0.11
CBDA	14.15	141.5	0.06
CBD	2.12	21.2	0.06
CBN	<LOQ	<LOQ)	0.06
$\Delta 8$ THC	<LOQ	<LOQ)	0.06
‡ CBC	0.17	1.7	0.06
‡ CBGA	0.20	2.0	0.06
‡ CBG	<LOQ	<LOQ)	0.06
‡ CBDV	<LOQ	<LOQ)	0.06
‡ CBDVA	<LOQ	<LOQ)	0.06
‡ THCVA	<LOQ	<LOQ)	0.06
‡ CBDQ	<LOQ	<LOQ)	0.06



Total THC and Total CBD are calculated values per OAR 333-064-0100. Cannabinoid values for plant matter samples are reported on a dry weight basis. Water activity action level is 0.65Aw. LOQ= Limit of Quantitation. NR=Not Reported.

[Rogue Research Lab LLC](#)
[218 E. Main Street, Rogue River, OR 97537](#)
[Tel. 541-582-1962](#)
[ORELAP 4107 OLCC 101050708B](#)
[rogueresearchlab.com](#)


 Craig Berry - Lab Director
 11/22/22


ROGUE RESEARCH LAB

Results pertain to submitted samples only. Rogue Research Lab LLC makes no claims as to the consumer safety or other risks associated with any detected or non-detected amounts of any pesticides, solvents or other adulterants. This report shall not be reproduced, unless in its entirety, without written approval from Rogue Research Lab LLC. Samples were received in good condition and all QC samples met acceptance criteria of the method; data available upon request. Analytes accompanied by dagger (‡) are not within the scope of accreditation and are for informational purposes only.



Certificate of Analysis

Horn Creek Hemp

P.O.Box 517

Jacksonville, OR, 97530, US

Telephone: (541) 261-4900

Email: sales@horncreekhemp.com

License #: R&D

Sample : CE11020006-001

Harvest/LOT ID: N/A

Batch# : N/A

Sampled : 10/20/21

Ordered : 10/20/21

Sample Size Received : 3 gram

Total Weight/Volume : N/A

Completed : 10/25/21 **Expires:** 10/25/22

Sample Method : SOP-024

Page 2 of 4



Terpenes

TESTED

Terpenes	LOQ(mg/g)	Result (mg/g)	Result	Terpenes	LOQ(mg/g)	Result (mg/g)	Result
TRANS-CARYOPHYLLENE	0.08	3.137		TERPINOLENE	0.08	<LOQ	
(1R)-ENDO-(+)-FENCHYL ALCOHOL	0.08	<LOQ		LINALOOL	0.08	0.214	
CAMPHOR	0.08	<LOQ		GERANIOL	0.08	<LOQ	
(1R)-(-)-CAMPHOR	0.08	<LOQ		GAMMA-TERPINENE	0.08	<LOQ	
(1S)-(-)-CAMPHOR	0.08	<LOQ		EUCALYPTOL	0.08	<LOQ	
HEXAHYDROTHYMOL (L-MENTHOL)	0.08	<LOQ		(-)-ALPHA-BISABOLOL	0.08	<LOQ	
TERPINEOL	0.08	<LOQ		(-)-ISOPULEGOL	0.08	<LOQ	
NEROL	0.08	<LOQ		(-)-CARYOPHYLLENE	0.08	0.092	
(+)-PULEGONE	0.08	<LOQ		OXIDE			
GERANYL ACETATE	0.08	<LOQ		ISOBORNEOL	0.08	<LOQ	
ALPHA-CEDRENE	0.08	<LOQ		CAMPENE	0.08	<LOQ	
ALPHA-HUMULENE	0.08	1.129					
VALENCENE	0.08	<LOQ					
ALPHA FARNESENE	0.02	0.44					
BETA FAMESENE	0.059	1.276					
CIS-NEROLIDOL	0.08	<LOQ					
TRANS-NEROLIDOL	0.08	<LOQ					
GUAJOL	0.02	0.747					
(+)-CEDROL	0.08	<LOQ					
BETA-PINENE	0.08	0.579					
FENCHONE	0.08	<LOQ					
ALPHA-TERPINENE	0.08	<LOQ					
SABINENE HYDRATE	0.08	<LOQ					
BETA-OCIMENE, CIS-OCIMENE	0.012	0.674					
TRANS- BETA- OCIMENE	0.067	0.164					
(R)-(+)-LIMONENE	0.08	0.452					
(1S)-(+)-3-CARENE	0.08	<LOQ					
P-MENTHA-1,5-DIENE (ALPHA-PHELLANDRENE)	0.08	<LOQ					
BETA-MYRCENE	0.08	9.418					
SABINENE	0.08	<LOQ					
A-PINENE	0.08	<LOQ					
Total (mg/g)		18.322					



Terpenes

TESTED

Analyzed by 12	Weight 499g	Extraction date 10/21/21 03:10:25	Extracted By 12
Analysis Method -SOP.T.40.090		Reviewed On - 10/22/21 13:56:32	
Analytical Batch -CE000471TER			
Instrument Used : GCMS-QP2020 EID:0170			
Running On : 10/21/21 15:24:58			
Batch Date : 10/21/21 15:19:33			
Reagent	Dilution	Consums. ID	
	40		
Terpenoid profile screening is performed using GC-MS with Liquid Injection (Gas Chromatography - Mass Spectrometer) using Method SOP.T.40.091 Terpenoid Analysis Via GC-MS			