

Horn Creek Hemp

Sample CBG White

Strain

<LOQ	0.38%	14.57%
Δ9 THC	Total CBD	Total Cannabinoids
Not tested	Pass	145.7
Water Activity	12.32	mg / g Total Cannabinoids
	Moisture	

Sample ID **23021120588**

Matrix **Flower**



Harvest/Prod Date

Report Created **2/3/2023**

Results Valid Until

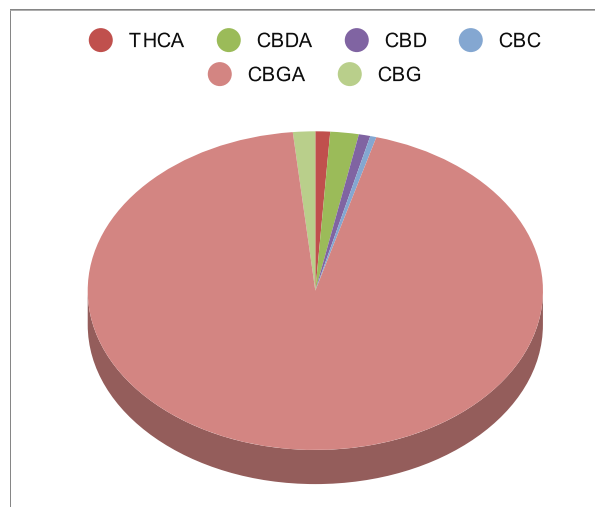
2/3/2024

Sample Extracted
2/1/2023 8:25

Sample Analyzed
2/1/2023 14:13


Method SOP LO001-R11

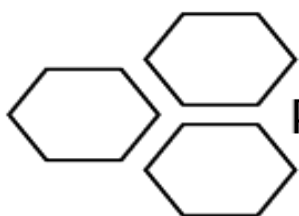
Cannabinoids	%Weight	mg/ gram	LOQ(% /w)
Δ9 THC	<LOQ	<LOQ)	0.06
THCA	0.15	1.5	0.06
Total THC (THCA*0.877)+9THC	0.13	1.3	0.11
CBDA	0.29	2.9	0.06
CBD	0.12	1.2	0.06
CBN	<LOQ	<LOQ)	0.06
Δ8 THC	<LOQ	<LOQ)	0.06
CBC	0.06	0.6	0.06
CBGA	13.71	137.1	0.06
CBG	0.23	2.3	0.06
CBDV	<LOQ	<LOQ)	0.06
CBDVA	<LOQ	<LOQ)	0.06
THCVA	<LOQ	<LOQ)	0.06
CBDQ	<LOQ	<LOQ)	0.06
HHC	<LOQ	<LOQ)	0.09



Total THC and Total CBD are calculated values per OAR 333-064-0100. Cannabinoid values for plant matter samples are reported on a dry weight basis. Water activity action level is 0.65Aw. LOQ= Limit of Quantitation. NR=Not Reported.

[Rogue Research Lab LLC](#)
[218 E. Main Street, Rogue River, OR 97537](#)
[Tel. 541-582-1962](#)
[ORELAP 4107 OLCC 101050708B](#)
[rogueresearchlab.com](#)


 Craig Berry - Lab Director
 2/3/23



ROGUE RESEARCH LAB

Terpene Analysis

Customer Horn Creek Hemp

Sample Name CBG White

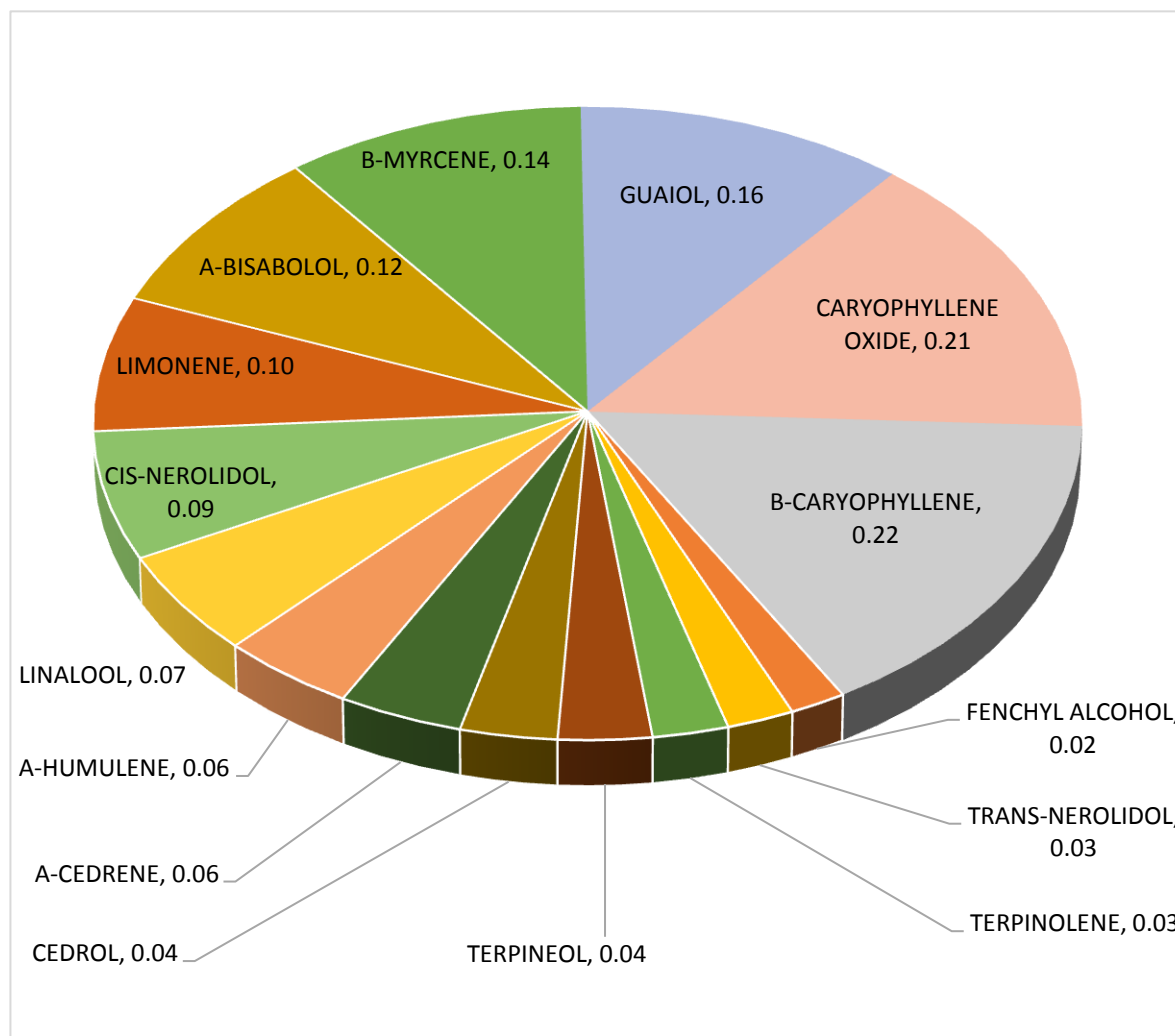
File Name 230211200588

Date/Time Extracted: 2/1/2023 08:25

Date/Time Analyzed: 2/1/2023 12:55

Analysis Method/SOP: LO 001R10/4-22RC1124

TESTED FOR : A-BISABOLOL, A-CEDRENE, A-HUMULENE, A-PHELLANDRENE, A-PINENE, A-TERPINENE, B-CARYOPHYLLENE, B-MYRCENE, BORNEOL, B-PINENE, CAMPHENE, CAMPHOR, CARYOPHYLLENE OXIDE, CEDROL, CIS-NEROLIDOL, D-CARENE, DL-MENTHOL, EUCALYPTOL, FARNESENE, R&L FENCHONE, FENCHYL ALCOHOL, GERANIOL, GERANYL ACETATE, G-TERPINENE, GUAJOL, ISOBORNEOL, ISOPULEGOL, LIMONENE, LINALOOL, NEROL, OCIMENE, P-CYMENE, PULEGONE, SABINENE, TERPINEOL, TERPINOLENE, TRANS-NEROLIDOL, TRANS-OCIMENE, VALENCENE.



Craig Berry - Lab Director

2/3/2023

Terpene total w/w%

1.40