

Horn Creek Hemp

Sample

Sour Hawaiian Haze

Strain

<LOQ	14.97%	17.85%
$\Delta 9$ THC	Total CBD	Total Cannabinoids
Not tested	Pass	178.5
Water Activity	Moisture	mg / g Total Cannabinoids

Sample ID

23021120589

Matrix

Flower



Harvest/Prod Date

Report Created

2/3/2023

Results Valid Until

2/3/2024

Sample Extracted

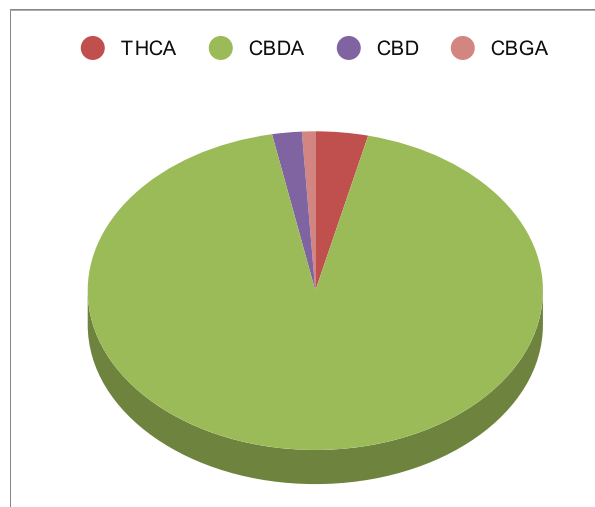
2/1/2023 8:25

Sample Analyzed

2/1/2023 14:25

Method SOP LO001-R11

Cannabinoids	%Weight	mg/ gram	LOQ(% /w)
$\Delta 9$ THC	<LOQ	<LOQ)	0.06
THCA	0.67	6.7	0.06
Total THC ($_{THCA} \times 0.877$)+ $\Delta 9$ THC	0.58	5.8	0.11
CBDA	16.64	166.4	0.06
CBD	0.37	3.7	0.06
CBN	<LOQ	<LOQ)	0.06
$\Delta 8$ THC	<LOQ	<LOQ)	0.06
CBC	<LOQ	<LOQ)	0.06
CBGA	0.17	1.7	0.06
CBG	<LOQ	<LOQ)	0.06
CBDV	<LOQ	<LOQ)	0.06
CBDVA	<LOQ	<LOQ)	0.06
THCVA	<LOQ	<LOQ)	0.06
CBDQ	<LOQ	<LOQ)	0.06
HHC	<LOQ	<LOQ)	0.09



Total THC and Total CBD are calculated values per OAR 333-064-0100. Cannabinoid values for plant matter samples are reported on a dry weight basis. Water activity action level is 0.65Aw. LOQ= Limit of Quantitation. NR=Not Reported.


[Rogue Research Lab LLC](#)

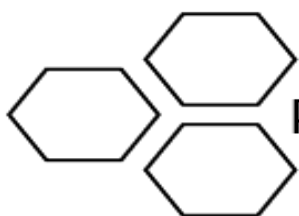
[218 E. Main Street, Rogue River, OR 97537](#)

[Tel. 541-582-1962](#)

[ORELAP 4107](#) [OLCC 101050708B](#)

[rogueresearchlab.com](#)


 Craig Berry - Lab Director
 2/3/23



ROGUE RESEARCH LAB

Terpene Analysis

Customer Horn Creek Hemp

Sample Name Sour Hawaiian

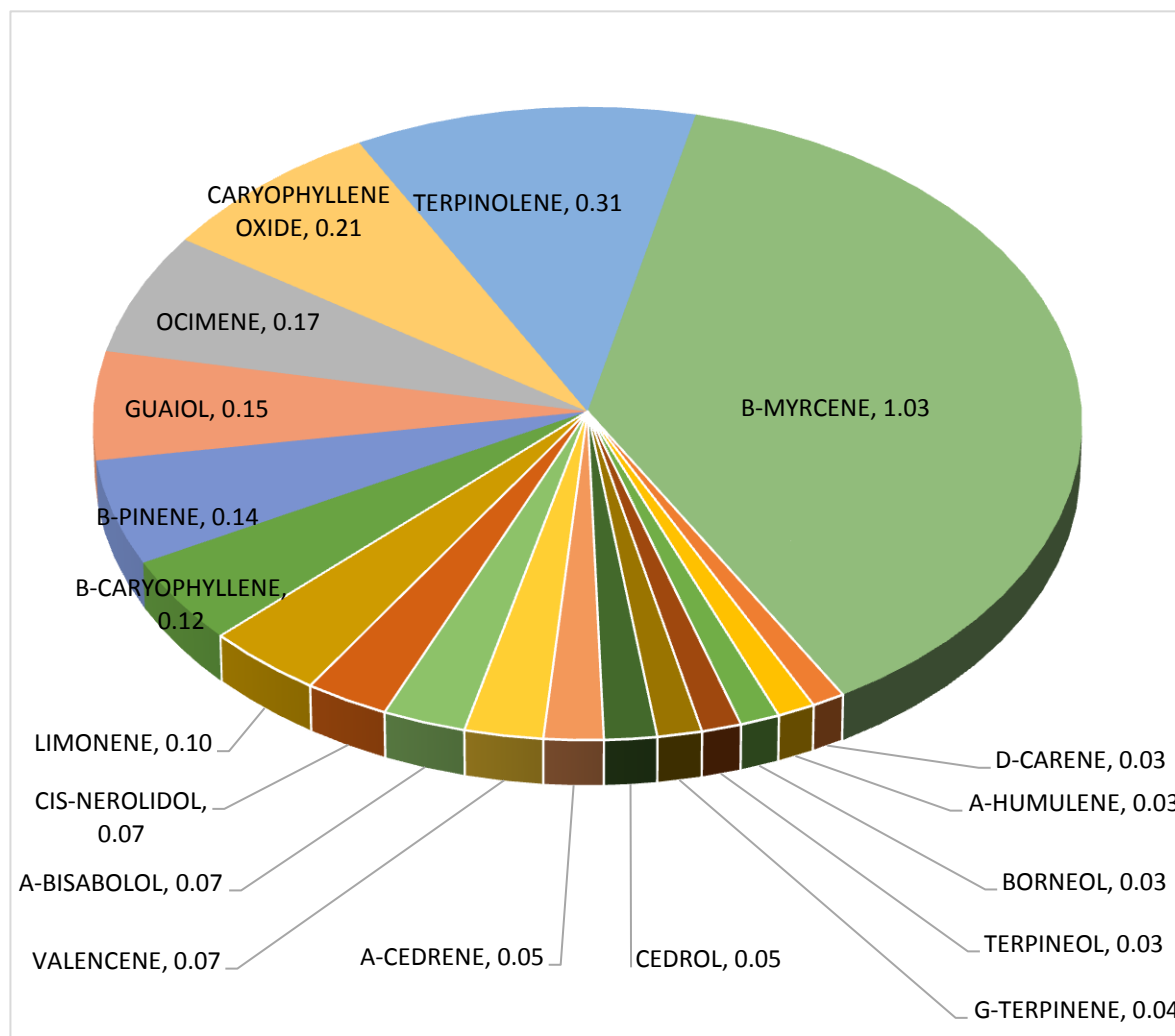
File Name 230211200589

Date/Time Extracted: 2/1/2023 08:25

Date/Time Analyzed: 2/1/2023 13:34

Analysis Method/SOP: LO 001R10/4-22RC1124

TESTED FOR : A-BISABOLOL, A-CEDRENE, A-HUMULENE, A-PHELLANDRENE, A-PINENE, A-TERPINENE, B-CARYOPHYLLENE, B-MYRCENE, BORNEOL, B-PINENE, CAMPHENE, CAMPHOR, CARYOPHYLLENE OXIDE, CEDROL, CIS-NEROLIDOL, D-CARENE, DL-MENTHOL, EUCALYPTOL, FARNESENE, R&L FENCHONE, FENCHYL ALCOHOL, GERANIOL, GERANYL ACETATE, G-TERPINENE, GUAIOL, ISOBORNEOL, ISOPULEGOL, LIMONENE, LINALOOL, NEROL, OCIMENE, P-CYMENE, PULEGONE, SABINENE, TERPINEOL, TERPINOLENE, TRANS-NEROLIDOL, TRANS-OCIMENE, VALENCENE.



Craig Berry - Lab Director

2/3/2023

Terpene total w/w%

2.72