

## Horn Creek Hemp

Sample

Kush Cake

Strain

<b>&lt;LOQ</b>	<b>27.78%</b>	<b>34.30%</b>
$\Delta 9$ THC	Total CBD	Total Cannabinoids
<b>Not tested</b>	<b>Pass</b>	<b>343.0</b>
Water Activity	Moisture	mg / g Total Cannabinoids

Sample ID

**24010060018**

Matrix

Kief



Harvest/Prod Date

Report Created

1/9/2024

Results Valid Until

1/9/2025

Sample Extracted

1/4/2024 9:48:00

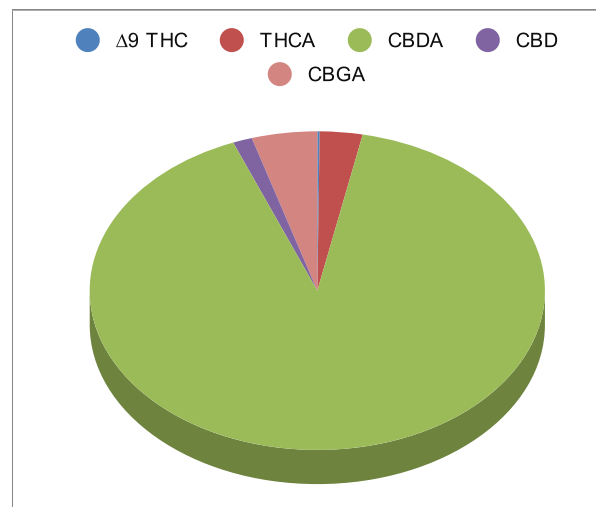
Sample Analyzed

1/4/2024 12:21

Method SOP LO001-R11

### Cannabinoids

	%Weight	mg/ gram	LOQ(% /w)
$\Delta 9$ THC	<LOQ	<LOQ)	0.06
THCA	1.04	10.4	0.06
Total THC (THCA*0.877)+9THC	0.97	9.7	0.06
CBDA	31.13	311.3	0.06
CBD	0.47	4.7	0.06
CBN	<LOQ	<LOQ)	0.06
$\Delta 8$ THC	<LOQ	<LOQ)	0.06
CBC	<LOQ	<LOQ)	0.06
CBGA	1.60	16.0	0.06
CBG	<LOQ	<LOQ)	0.06
CBDV	<LOQ	<LOQ)	0.06
CBDVA	<LOQ	<LOQ)	0.06
THCVA	<LOQ	<LOQ)	0.06
CBDQ	<LOQ	<LOQ)	0.06
HHC	<LOQ	<LOQ)	0.09



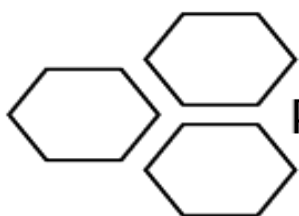
Total THC and Total CBD are calculated values per OAR 333-064-0100. Cannabinoid values for plant matter samples are reported on a dry weight basis. Water activity action level is 0.65Aw. LOQ= Limit of Quantitation. NR=Not Reported.

[Rogue Research Lab LLC](#)

[Rogue River, OR 97537](#) Tel. 541-582-1962

[rogueresearchlab.com](http://rogueresearchlab.com)

Craig Berry - Lab Director  
1/9/24



ROGUE RESEARCH LAB

## Terpene Analysis

Customer: Horn Creek Hemp

Sample Name: Kush Cake

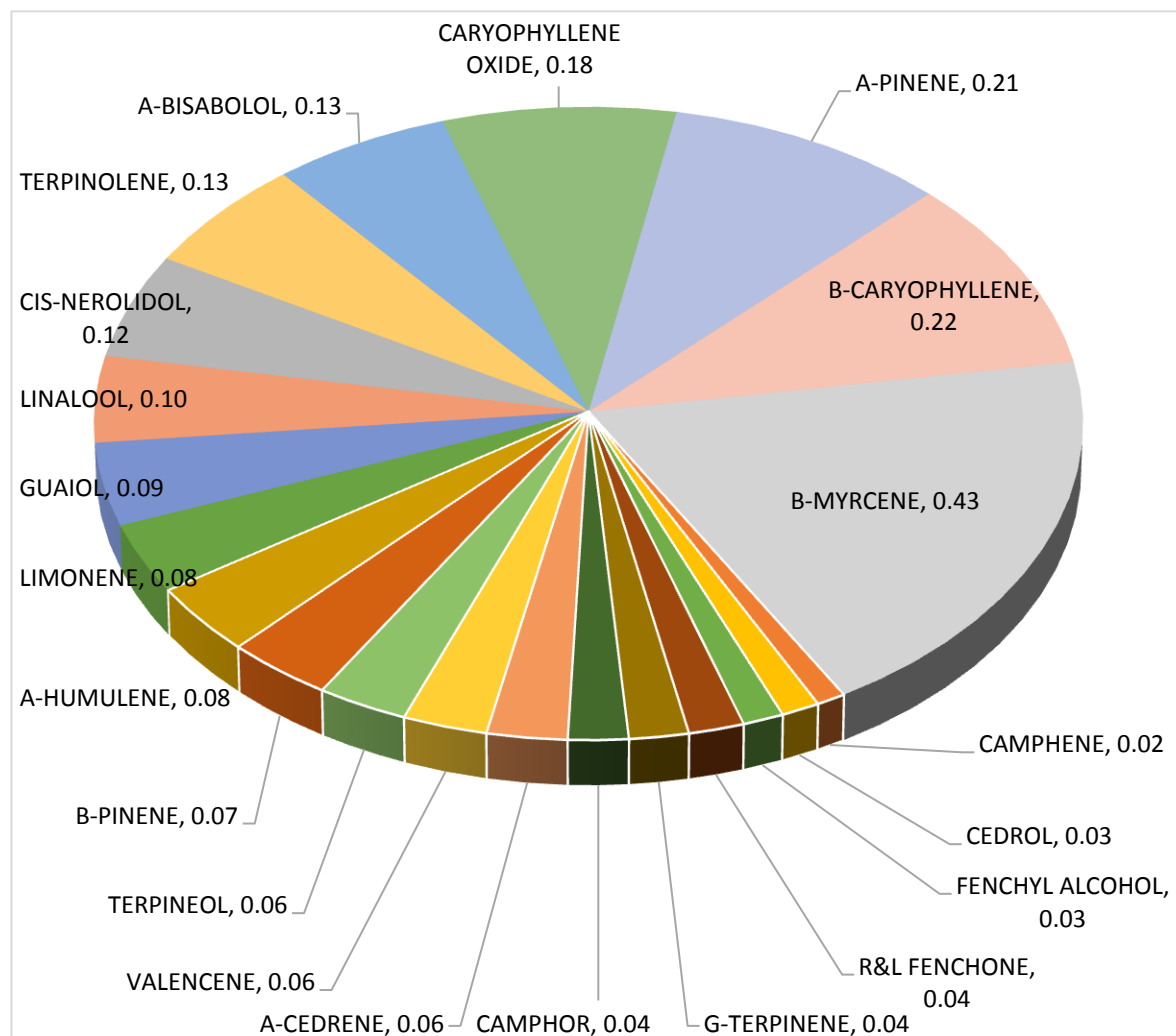
File Name: 24010060018

Date/Time Extracted: 1/4/2024 09:48

Date/Time Analyzed: 1/6/2024 16:19

Analysis Method/SOP: LO 001R11/RC082523

TESTED FOR : A-BISABOLOL, A-CEDRENE, A-HUMULENE, A-PHELLANDRENE, A-PINENE, A-TERPINENE, B-CARYOPHYLLENE, B-MYRCENE, BORNEOL, B-PINENE, CAMPHENE, CAMPHOR, CARYOPHYLLENE OXIDE, CEDROL, CIS-NEROLIDOL, D-CARENE, DL-MENTHOL, EUCALYPTOL, FARNESENE, R&L FENCHONE, FENCHYL ALCOHOL, GERANIOL, GERANYL ACETATE, G-TERPINENE, GUAJOL, ISOBORNEOL, ISOPULEGOL, LIMONENE, LINALOOL, NEROL, OCIMENE, P-CYMENE, PULEGONE, SABINENE, TERPINEOL, TERPINOLENE, TRANS-NEROLIDOL, TRANS-OCIMENE, VALENCENE.



Craig Berry - Lab Director

1/9/2024

Terpene total w/w%

2.22