

Horn Creek Hemp

Sample

Sour Blend

Strain

0.10%	21.40%	25.91%
$\Delta 9$ THC	Total CBD	Total Cannabinoids
Not tested	Pass	259.1
Water Activity	Moisture	mg / g Total Cannabinoids

Sample ID

24010060017

Matrix

Kief



Harvest/Prod Date

Report Created

1/9/2024

Results Valid Until

1/9/2025

Sample Extracted

1/4/2024 9:48:00

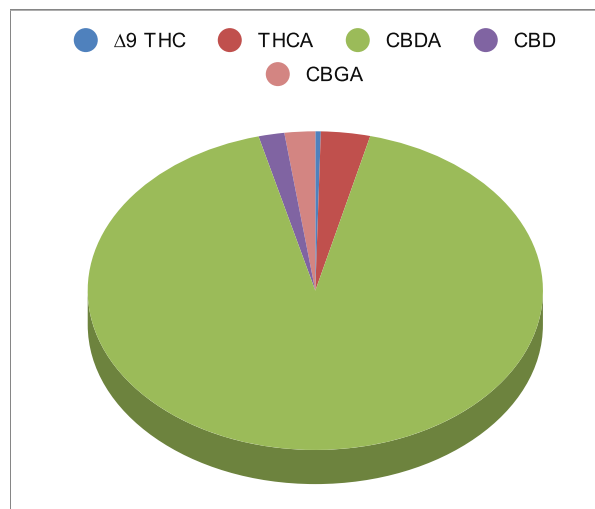
Sample Analyzed

1/4/2024 12:09

Method SOP LO001-R11

Cannabinoids

	%Weight	mg/ gram	LOQ(% /w)
$\Delta 9$ THC	0.10	1.0	0.06
THCA	0.90	9.0	0.06
Total THC (THCA*0.877)+9THC	0.89	8.9	0.06
CBDA	23.86	238.6	0.06
CBD	0.48	4.8	0.06
CBN	<LOQ	<LOQ)	0.06
$\Delta 8$ THC	<LOQ	<LOQ)	0.06
CBC	<LOQ	<LOQ)	0.06
CBGA	0.56	5.6	0.06
CBG	<LOQ	<LOQ)	0.06
CBDV	<LOQ	<LOQ)	0.06
CBDVA	<LOQ	<LOQ)	0.06
THCVA	<LOQ	<LOQ)	0.06
CBDQ	<LOQ	<LOQ)	0.06
HHC	<LOQ	<LOQ)	0.09




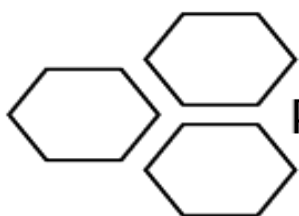
Total THC and Total CBD are calculated values per OAR 333-064-0100. Cannabinoid values for plant matter samples are reported on a dry weight basis. Water activity action level is 0.65Aw. LOQ= Limit of Quantitation. NR=Not Reported.

[Rogue Research Lab LLC](https://rogue-research-lab.com)

[Rogue River, OR 97537](https://rogue-research-lab.com) Tel. 541-582-1962

rogue-research-lab.com


 Craig Berry - Lab Director
 1/9/24



ROGUE RESEARCH LAB

Terpene Analysis

Customer Horn Creek Hemp

Sample Name Sour Blend

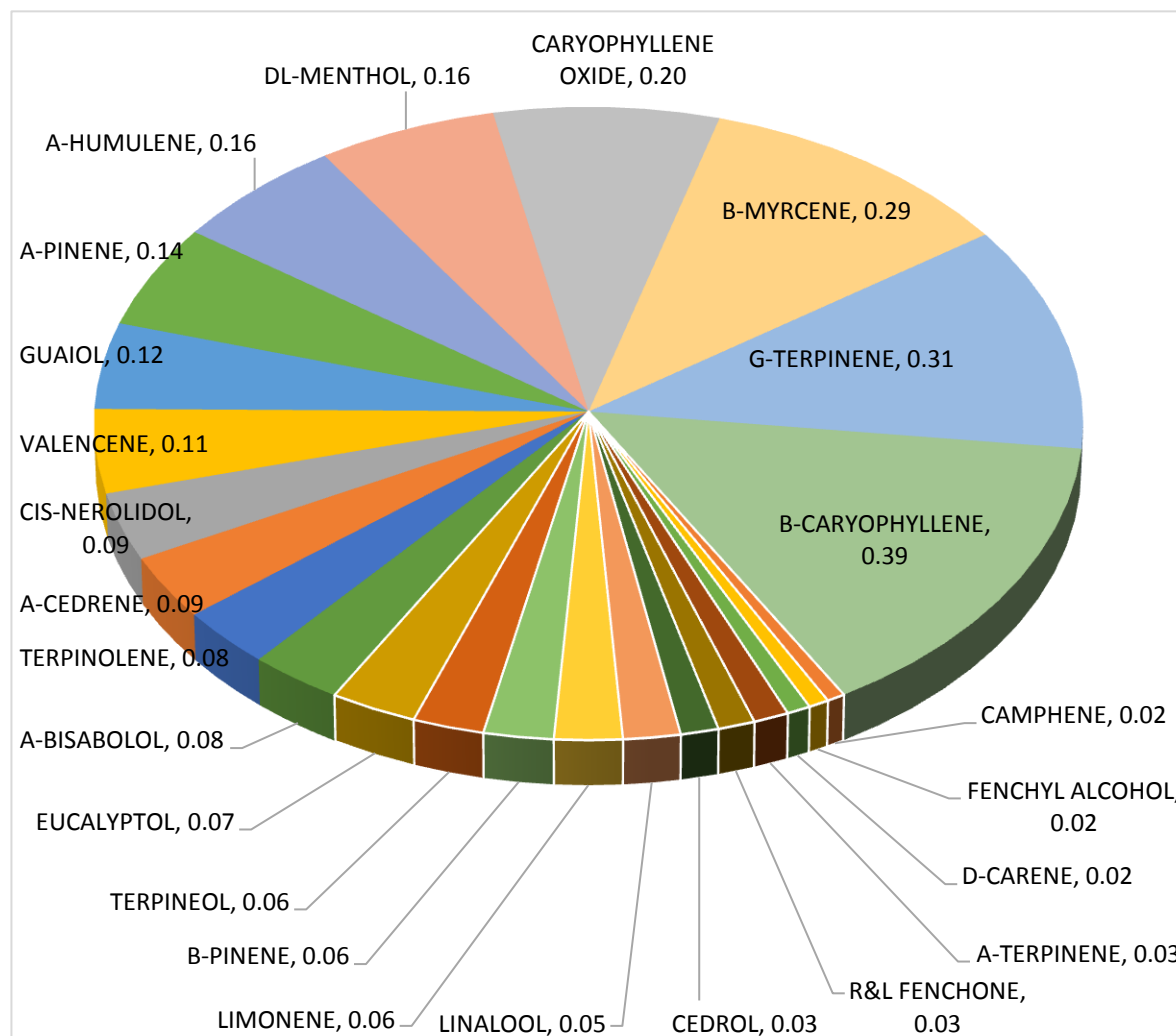
File Name 24010060017

Date/Time Extracted: 1/4/2024 09:48

Date/Time Analyzed: 1/6/2024 15:40

Analysis Method/SOP: LO 001R11/RC082523

TESTED FOR : A-BISABOLOL, A-CEDRENE, A-HUMULENE, A-PHELLANDRENE, A-PINENE, A-TERPINENE, B-CARYOPHYLLENE, B-MYRCENE, BORNEOL, B-PINENE, CAMPHENE, CAMPHOR, CARYOPHYLLENE OXIDE, CEDROL, CIS-NEROLIDOL, D-CARENE, DL-MENTHOL, EUCALYPTOL, FARNESENE, R&L FENCHONE, FENCHYL ALCOHOL, GERANIOL, GERANYL ACETATE, G-TERPINENE, GUAIOL, ISOBORNEOL, ISOPULEGOL, LIMONENE, LINALOOL, NEROL, OCIMENE, P-CYMENE, PULEGONE, SABINENE, TERPINEOL, TERPINOLENE, TRANS-NEROLIDOL, TRANS-OCIMENE, VALENCENE.



Craig Berry - Lab Director

1/9/2024

Terpene total w/w%

2.65